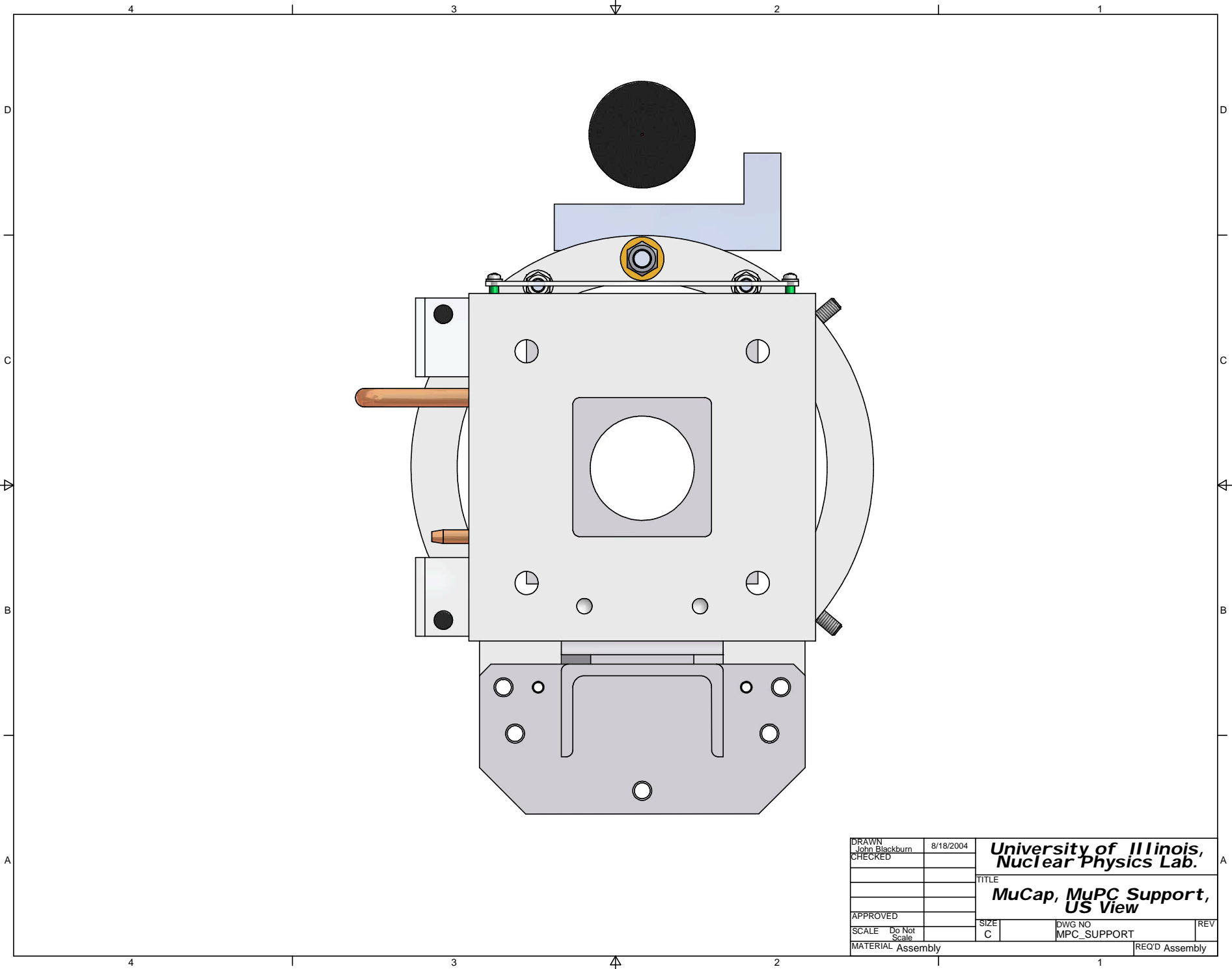
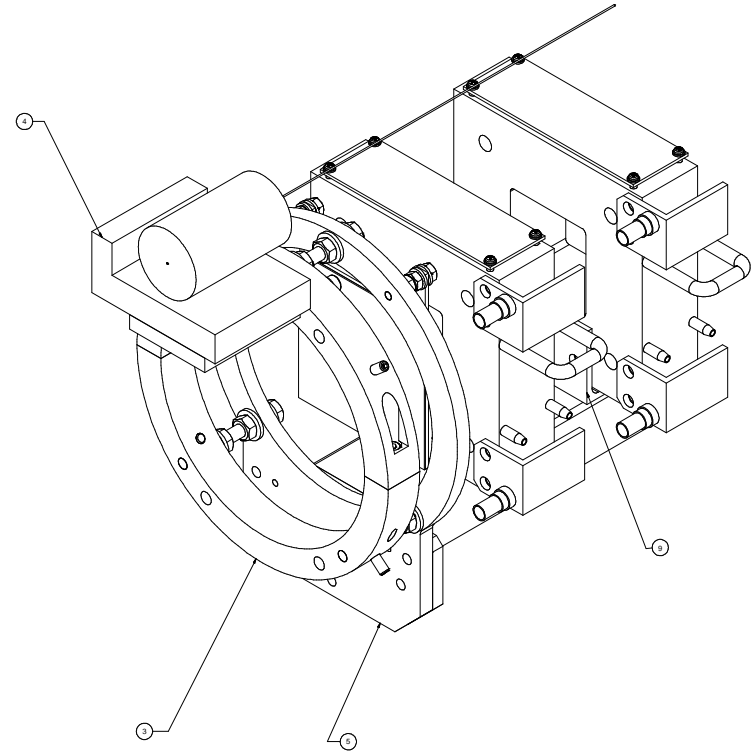
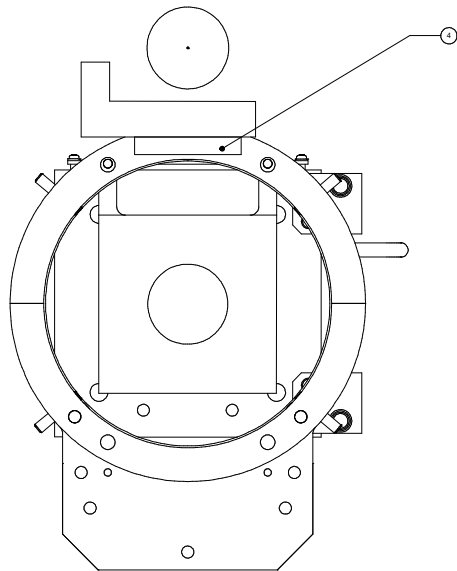
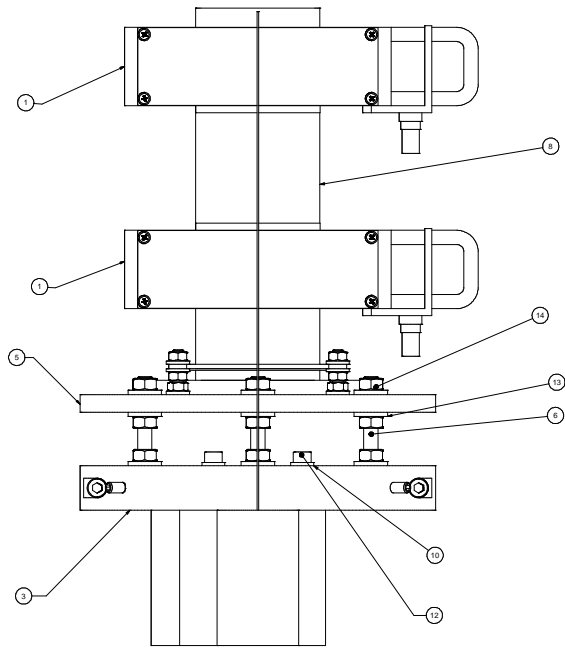


DRAWN	John Blackburn	8/18/2004	University of Illinois, Nuclear Physics Lab.		
CHECKED					
			TITLE		
			MuCap, MuPC Support, DS View		
APPROVED			SIZE	C	DWG NO
SCALE	Do Not Scale				MPC_SUPPORT
MATERIAL	Assembly				REQ'D Assembly
					REV



DRAWN John Blackburn	8/18/2004	University of Illinois, Nuclear Physics Lab.		
CHECKED				
		MuCap, MuPC Support, US View		
APPROVED		SIZE C	DWG NO MPC_SUPPORT	REV
SCALE Do Not Scale		REQ'D Assembly		
MATERIAL Assembly				



Parts List			
ITEM	QTY	PART NUMBER	DESCRIPTION
1	2	MPC Assembly	
2	1	Pin, coil	
3	1	BeamPipe_Ring2	
4	1	Laser Mount Assy	
5	1	MPC support 045 V/S	
6	3	M8x75 THD ROD	
7	1	MPC support 052-1	
8	1	MPC support channel	
9	2	MPC support Angle	
10	6	ANSI B18.22 M - 6 N	Plain Washer
11	6	ISO 4032 - M6	Hex Nut
12	4	ISO 4762 - M6 x 40	Hexagon Socket Head Cap Screw
13	6	ANSI B18.22 M - 6 N	Plain Washer
14	6	ISO 4032 - M6	Hex Nut

DESIGNED	5/18/2001	University of Illinois, Nuclear Physics Lab.
DRAWN		
CHECKED		
MuCap, MuPC Support Assembly		PROJECT: MPC SUPPORT SCALE: TO BE DETERMINED MATERIAL: Assembly
APPROVED		REV
		1 REGD Assembly